

# Dell Latitude 2120

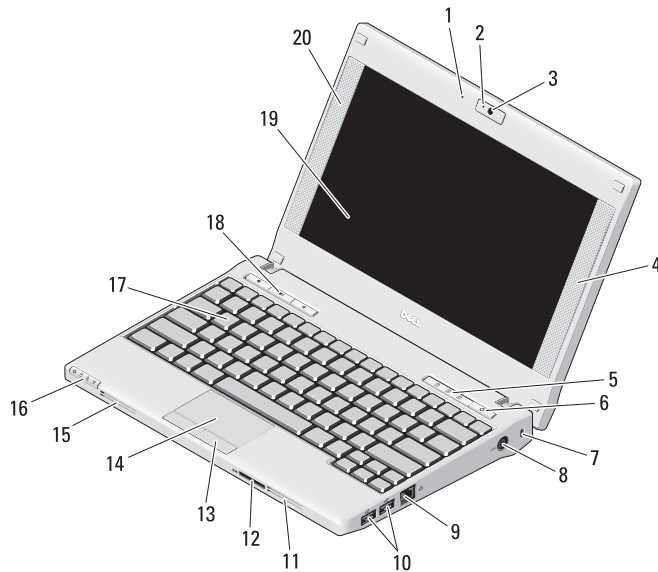
## Setup and Features Information

### Front View

### About Warnings



**WARNING:** A **WARNING** indicates a potential for property damage, personal injury, or death.



- 1 microphone
- 2 camera status light (optional)
- 3 camera (optional)
- 4 right speaker
- 5 keyboard status lights (3)
- 6 power button
- 7 security cable slot
- 8 power connector
- 9 network connector
- 10 USB 2.0 connectors (2)
- 11 cooling vents
- 12 Secure Digital (SD) memory-card reader
- 13 touchpad buttons (2)
- 14 touchpad
- 15 cooling vents
- 16 device status lights (4)
- 17 keyboard
- 18 volume control buttons (3)
- 19 display (multi touch-screen feature is optional)
- 20 left speaker



Regulatory Model: P02T

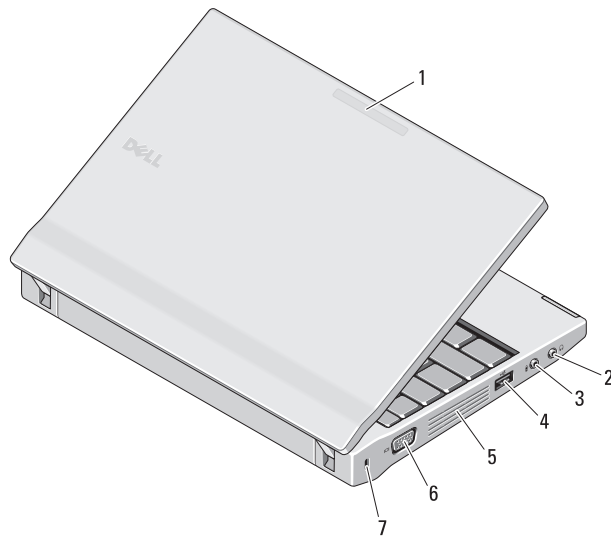
Regulatory Type: P02T002

September 2010



0HW7HDA00

## Back View



- 1 network activity indicator (optional)
- 2 line-out connector (headphone connector)
- 3 line-in connector (microphone connector)
- 4 USB 2.0 connector
- 5 cooling vents
- 6 video connector (VGA)
- 7 security cable slot

**!** **WARNING:** Do not block, push objects into, or allow dust to accumulate in the air vents. Do not store your Dell computer in a low-airflow environment, such as a closed briefcase, while it is running. Restricting the airflow can damage the computer or cause a fire. The computer turns on the fan when the computer gets hot. Fan noise is normal and does not indicate a problem with the fan or the computer.

## Quick Setup

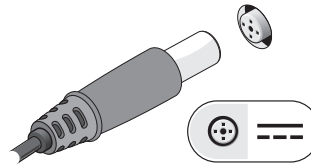
**WARNING:** Before you begin any of the procedures in this section, read the safety information that shipped with your computer. For additional best practices information, see [www.dell.com/regulatory\\_compliance](http://www.dell.com/regulatory_compliance).

**WARNING:** The AC adapter works with electrical outlets worldwide. However, power connectors and power strips vary among countries. Using an incompatible cable or improperly connecting the cable to the power strip or electrical outlet may cause fire or equipment damage.

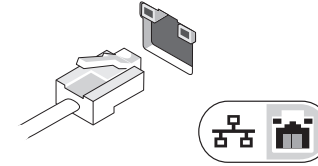
**CAUTION:** When you disconnect the AC adapter cable from the computer, grasp the connector, not the cable itself, and pull firmly but gently to avoid damaging the cable. When you wrap the AC adapter cable, ensure that you follow the angle of the connector on the AC adapter to avoid damaging the cable.

**NOTE:** Some devices may not be included if you did not order them.

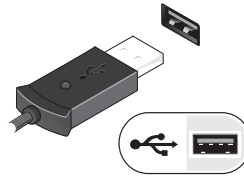
**1** Connect the AC adapter to the AC adapter connector on the portable computer and to the electrical outlet.



**2** Connect the network cable (optional).



**3** Connect USB devices, such as a mouse or a keyboard (optional).




**4** Open the computer display and press the power button to turn on the computer.



**NOTE:** It is recommended that you turn on and shut down your computer at least once before you install any cards or connect the computer to a docking device or other external device, such as a printer.

## Specifications

 **NOTE:** Offerings may vary by region. For more information regarding the configuration of your computer, click **Start**→**Help and Support** and select the option to view information about your computer.

### System Information

Processor type	Intel Atom N455 Intel Atom N550
Chipset	Intel NM10 Express Chipset

### Video

Video type:	Intel UMA graphics
Data bus	integrated video
Video controller	Intel Graphics Media Accelerator Broadcom Crystal HD media accelerator (optional)

### Memory

Memory module connector	1 SODIMM slot
Memory module capacity	1 GB and 2 GB
Memory type	667 MHz DDR3
Minimum memory	1 GB
Maximum memory	2 GB

### Battery

Type	6-cell "smart" lithium ion (56 WHr) 6-cell long-lifecycle lithium ion (54 WHr) 3-cell "smart" lithium ion (28 WHr)
Dimensions:	
6-cell	
Depth	48.13 mm (1.90 inches)
Height	42.46 mm (1.67 inches)
Width	204 mm (8.03 inches)
3-cell	
Depth	40.50 mm (1.60 inches)
Height	23.24 mm (0.91 inch)
Width	204 mm (8.03 inches)
Weight:	
6-cell	minimum weight — 340 g (0.74 lb) maximum weight — 350 g (0.77 lb)
3-cell	minimum weight — 185 g (0.41 lb) maximum weight — 190 g (0.42 lb)
Voltage	11.1 VDC (6-cell and 3-cell)
Temperature range:	
Operating	0 °C to 35 °C (32 °F to 95 °F)
Non-operating	-40 °C to 65 °C (-40 °F to 149 °F)
Coin-cell battery	3 V CR2032 lithium coin cell

**AC Adapter**

Input voltage	100 VAC to 240 VAC
Input current (maximum)	1.5A/1.6 A/1.7 A
Input frequency	50 Hz to 60 Hz
Output power	65 W/90W
Output current:	
65 W	4.34 A (maximum at 4-second pulse) 3.34 A (continuous)
90 W	5.62 A (maximum at 4-second pulse) 4.62 A (continuous)
Rated output voltage	19.5 +/- 1.0 VDC
Dimensions:	
Height	27.20 mm (1.07 inches)
Width	137.20 mm (5.40 inches)
Depth	57.80 mm (2.28 inches)
Temperature range:	
Operating	0 °C to 35 °C (32 °F to 95 °F)
Non-operating	-40 °C to 65 °C (-40 °F to 149 °F)

**Physical**

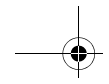
Height:	
without touchscreen	22.5 mm to 39.9 mm (0.89 inch to 1.57 inches)
with touchscreen	24.1 mm to 41.5 mm (0.95 inch to 1.63 inches)

**Physical (continued)**

Width:	
with/without touchscreen	265 mm (10.43 inches)
Depth:	
with/without touchscreen	187 mm (7.36 inches)
Weight:	
(3-cell battery without touchscreen)	1.31 kg (2.88 lb)
(6-cell battery without touchscreen)	1.48 kg (3.26 lb)

**Environmental**

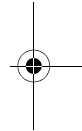
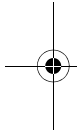
Temperature range:	
Operating	0 °C to 35 °C (32 °F to 95°F)
Non-operating	-40 °C to 65 °C (-40 °F to 149°F)
Relative humidity (maximum):	
Operating	10 % to 90 % (noncondensing)
Non-operating	5 % to 95 % (noncondensing)
Altitude (maximum):	
Operating	-15.2 m to 3048 m (-50 ft to 10,000 ft)
Non-operating	-15.2 m to 10,668 m (-50 ft to 35,000 ft)
Airborne contaminant level	G2 or lower as defined by ISA-S71.04-1985



## Finding More Information and Resources

See the safety and regulatory publications that shipped with your computer and the regulatory compliance website at [www.dell.com/regulatory\\_compliance](http://www.dell.com/regulatory_compliance) for more information on:

- Safety best practices
- Warranty
- Terms and Conditions
- Regulatory certification
- Ergonomics
- End User License Agreement



---

**Information in this publication is subject to change without notice.  
© 2010 Dell Inc. All rights reserved. Printed in the U.S.A.**

Reproduction of these materials in any manner whatsoever without the written permission of Dell Inc. is strictly forbidden.

Trademarks used in this text: Dell™, the DELL logo, and Latitude™, are trademarks of Dell Inc. Intel® is a registered trademark and Atom™ is a trademark of Intel Corporation in the U.S. and other countries.

Other trademarks and trade names may be used in this publication to refer to either the entities claiming the marks and names or their products. Dell Inc. disclaims any proprietary interest in trademarks and trade names other than its own.

